

DIVING INTO TAXES
2009

September
Articles

- **DIVING INTO TAXES—Hawaii NATP Annual Conference.** (8 CPE)
- **NATP Workshops** (16 CPE)
- **Tax Book**
- **NATP HI CPE Breakfast Meetings**
- **Hawaii Chapter Directors**
- **NATP National Conference Review**
- **Leaders Wanted!**
- **Sept 17 Breakfast Meeting Registration Form**



VOLUME III, ISSUE I

SEPTEMBER, 2009

NATP HAWAII ANNUAL CONFERENCE

We are only two months away from the Hawaii State NATP Chapter's Annual Conference! This year our Conference will be on Wednesday, November 4th at the Pacific Beach Hotel. The National NATP 1040 Workshops will be on the following two days, Thursday and Friday, November 5th and 6th. Mark your calendar now!

Our registration form will be posted on the NATP Hawaii website in September, (www.NATPTAX.COM, select Chapter Information and Hawaii).

The form will also be emailed to each member in the October Newsletter.



SEE YOU THERE!

SPEAKER TOPICS

- **Hi Dept of Tax Updates**
Kurt Kawafuchi
- **The Current Economy**
American Savings Bank
- **Mortgage Modification**
Dennis Oshiro
- **Social Security**
Jane Burigsay
- **IRS Updates**
Lori Cacioppo
- **Energy Credits**
Jeff Davis, The Solar Guy
- **Chamber of Commerce**
Jim Tollefson
- **Work Opportunity Credit**
Jennifer Birrell, ADP
- **NATP NATIONAL**
Mike Whittle

NATP 1040 WORKSHOPS NOV 5-6

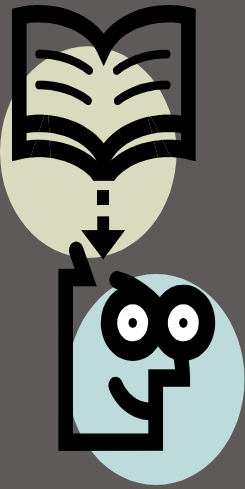
NATP's 1040 Workshops are a necessity for tax professionals looking to receive the latest individual tax law updates in order to prepare for the up-

coming tax season. The courses are taught by expert instructors who share the same day-to-day experiences as you. Join your friends and col-

leagues at

[Pacific Beach Hotel](#)
2490 Kalakaua Ave
808.922.1233

Earn up to 16 CPE.



Next
CPE Breakfast
Meeting

Thursday
September 17
7:00 am—9:00 am

Tax Book

Your Chapter has ordered the reference book, TaxBook, in quantity in order to give the members a better price. I have received the order form and am working on the individual prices we can offer. This order form will be enclosed in the next newsletter. The Board of Directors looked at both the TaxBook and Quickfinder to determine which book to offer since it would not be to our advantage to split the order. Both books offer the chapter money back according to how many books are ordered. We all liked both books but decided to stay with the TaxBook again this year.

Many of you have already received order forms from both books. Be assured unless you are ordering in quantity, the price we will offer should be cheaper than ordering on your own.

This is another example of how your membership in NATP saves you money.

NATP HI CPE BREAKFAST MEETINGS

Our next CPE Breakfast meeting for 2009 will be held at the Waialeale Ko'olau Golf Course Clubhouse on September 17th. The presentation will be made by our Chapter President, **Ms. Janet Williams-Reyes, CPA/PFS**, President of VR Financial Tax Planning and Wealth Management.

Janet will discuss the highlights from ARRP many tax

strategies we can suggest to our clients for the 2010 tax season.

As always, you will receive 1 hour of CPE at our breakfast meetings. Find the registration form on page 6 of this newsletter.

If you need to update your email address, please contact Peg Sawyer, our Chapter Secretary.

mes222@hotmail.com

HAWAII CHAPTER DIRECTORS

Officers:

President:
 Janet W Reyes, CPA/PFS
 808-591-9959
 janet@janetreyescpa.com

Kathy Mannoia
 808-879-6964
 vipser-
 vices@hawaiiintel.net

Vice-President:
 Hank Erwin
 808-734-2357
 taxbust@aloha.com

Patricia Ernce
 808-262-8386
 pat@patstax.com

Denham Grearson
 808-259-8580
 Akamai@aloha.com

Treasurer:
 Jose Garma
 808-841-3779
 jgarmatax@aol.com

Sandy Lane
 808-327-0081
 sandylane@hawaii.rr.com

Secretary:
 Margaret (Peg) Sawyer
 808-943-6252
 mes222@hotmail.com

Joanne Chang
 808-596-8999
 joannec@hawaii.rr.com

Beth Ruze
 808-734-2581
 ruze@hawaii.edu

Bryan Newell
 808-923-0466
 Bryan.newell@jtax.com

Gloria Rabbon
 808-845-7995
 gloriarab-
 bon@yahoo.com

Henry Simmons
 808-325-5252
 simmonsfinancialser-
 vices@gmail.com

Herman Jordan
 808-671-5676
 H.Jordan_ea@hawaiiintel.
 net

**We are here
 to serve the
 members of
 our chapter.
 Please
 contact us
 for
 information
 or questions**

Board Members:

NATP NATIONAL CONFERENCE

If you've never been to a National Conference, you have missed a great experience! The last Conference held in Reno, Nevada in July, was no exception. Hawaii was represented by 10 attendees, three of which were Directors. The hotel meeting rooms were ample, with tables to sit at and within a short distance of each other so there was not much walking. The speakers were superb (as usual) and the format of having almost two hours for each subject allows for more in depth information and the ability to dig deeper into the subject. They added a session at 7:00 a.m. this year and surprisingly it was very well attended.

Sure, you've been doing taxes for years, and you really don't need more education!! Wrong!!! I've been doing taxes for over 30 years and there are still times during a session that I think "Oops! I've been doing that wrong!!" On top of that, there are more tax law changes this year than we have had in many years. You aren't doing your clients a favor when you don't attend some educational classes. And you might as well have fun doing it.

Next year the Conference will be in Austin, Texas which is a beautiful city with lots to see and do. Plan on being there!



LEADERS WANTED!!

FOR THE HAWAII NATP FUTURE.

Do you have the following Qualities?

- Passion for your industry
- Willingness to work alone, yet be part of the team
- Ability to attend at least three meetings a year.
- Desire for an outlet to your creative and innovative side

What does a director do?

- They help set policies
- Participates in the operation of the chapter
- Plan the annual meetings and conferences
- Volunteering on average 3-4 hours per month (but not during tax season)

What are the benefits?

- Mileage reimbursement for attending HI N.A.T.P. meetings
- Free lunch at all HI chapter board meetings
- Working and networking with a dedicated and enthusiastic group of tax professionals





NATIONAL ASSOCIATION OF TAX PROFESSIONALS

HAWAII CHAPTER

Presents

**THE AMERICAN RECOVERY AND REINVESTMENT ACT
&
OTHER TAX CHANGES & PLANNING STRATEGIES FOR THE 2010 TAX SEASON**

**Presented by
JANET WILLIAMS-REYES, CPA/PFS**

7:00 – 9:30 a.m. September 17, 2009 (1 hr. CPE)
Breakfast Buffet starts at 7:00
Clubhouse at Waikele, Ko’olau Dining Room
(Reservations are Mandatory)
Cancellations Accepted Until September 14, 2009
Questions? Call Janet Williams-Reyes 808-591-9959

Explanation of ARRA and Other Tax Changes

What the changes are and tax planning strategies to help your clients best take advantage of them.

Return this portion with payment to Treasurer, NATP – Hawaii Chapter, 1711 Violet St., Honolulu, HI 96819

Reserve ___ NATP member seats @\$18.00 each. Total: \$ _____

Reserve ___ NATP Non-member seats @\$25.00 each. Total: \$ _____

(Non-members joining NATP by September 17, 2009 will receive member’s discount on this and all 2009 Hawaii Chapter activities.)

Name (& Company if applicable).

Title